

Connecticut Dermatology and Dermatologic Surgery Society

Regional Scientific Meeting

WEDNESDAY, MAY 1, 2024



In the Glass Room
Live Wednesday, May 1 2024
4:30 pm - 9:00 pm

PROGRAM

The Aqua Turf Club • 556 Mulberry Street • Plantsville, Connecticut

The Connecticut Dermatology and Dermatologic Surgery Society

Live - Wednesday, May 1, 2024

The Aqua Turf, 556 Mulberry Street, Plantsville, Connecticut

Agenda

- 4:35 pm **Protecting Yourself in Private Equity Agreement-**
- Mark Abruzzo, Esq Wade, Goldstein, Landau & Abuzzo
- This course would address three different classes of physicians-Fellows, residents and practicing physicians, doctors joining non-PE practices (preemptive protection in the event of a subsequent sale); Associate physicians whose practices are being sold to PE and Owner physicians who are selling their practices to Private Equity.
- 5:30pm **"Pearls from the Dermatology-Rheumatology Clinic"**
- Ruth Ann Vleugels, MD, MPH, MBA
- Objectives: 1. Recognize clinical clues for cutaneous manifestations of autoimmune disease,
2. Explore novel and emerging therapies for cutaneous disease
- 6:30pm **Dinner in Glass Room**
- 7:00pm **Product Theater- Wagon Room**
- 7:45pm **AAD Update and Business Meeting- Ruth Ann Vleugels, MD MPH, MBA**
- 8:00pm **Tips and Pearls for Treating Inflammatory Skin Conditions: Psoriasis, Atopic Dermatitis, and LP**
- George Han, MD, PhD
- Objectives: 1. Recognize differences between psoriasis, atopic dermatitis, and lichen planus, 2. Select appropriate treatments for select inflammatory skin conditions. 3. Appraise upcoming promising medications for treating psoriasis, atopic dermatitis, and lichen planus.
- 8:35pm **Product Theater - Wagon Room**
- 9:20pm **Certificates and Door Prizes in Vendor Hall**

This activity has been planned and implemented in accordance with the accreditation requirements and policies of the Accreditation Council for Continuing Medical Education (ACCME) through the joint providership of CSEP and the CDDSS. CSEP is accredited by the ACCME to provide continuing medical education for physicians.

CSEP designates this educational activity for a maximum of 2.0 AMA PRA Category I Credit(s)TM toward the AMA Physicians Recognition Award. Each physician should claim only those hours of credit that he/she spent in the activity.

CT Dermatology and Dermatologic Surgery Society (CDDSS) Mission Statement

The Dermatology and Dermatologic Surgery Society is committed to advancing the highest standards of eye care through its continuing education activities. The semiannual CDDSS Scientific Education Programs are structured to present recent advances in the diagnosis and treatment of skin disease. The goal of CDDSS educational programs is to protect and improve patients' skin and skin health.

CDDSS Semiannual Scientific Education Programs are an opportunity for dermatologists and their staff to learn, identify and discuss critical issues facing their profession. CDDSS programs present recent advances in the diagnosis and treatment of skin disease, through lectures, panels, symposia, scientific papers and videos. CDDSS programs are designed to meet the clinical and educational needs of its members through the objectives proposed and evaluated by the CDDSS education committee.

CDDSS target audience includes dermatologists, dermatology mid-level providers and office managers. CDDSS educational activities include didactic lectures, panels, posters, videos and participatory activities. These activities are approved for CME credit whenever possible. CDDSS expects that its target audience will incorporate best practices presented in CDDSS educational programs into daily practice. Specific competency, performance and patient outcome goals that result from CDDSS programs are proposed by the presenters, reviewed by the CDDSS educational committee, and evaluated by the target audience participants.

Reviewed and adopted 5-3-23

Speakers Bios



George Han, MD, PhD

George Han, MD, PhD, is an Associate Professor in the Department of Dermatology at the Donald and Barbara Zucker School of Medicine at Hofstra / Northwell, where he leads efforts in clinical research and teledermatology. He is the current President of the Dermatologic Society of Greater New York, a member of the board of directors of the New York State Society of Dermatology and Dermatologic Surgery, a member of the Medical Board of the National Psoriasis Foundation, a Councilor of the International Psoriasis Council, and an Associate of the International Eczema Council. Dr. Han is an internationally recognized lecturer and researcher in numerous areas including atopic dermatitis, psoriasis, and teledermatology.

To date, he has over 80 publications in well-respected journals such as the Journal of the American Academy of Dermatology, the Journal of Investigative Dermatology, the British Journal of Dermatology, the Journal of Infectious Diseases, and the American Journal of Pathology, as well as several book chapters and patents. He remains active in both basic science research and clinical trials, serving as Principal Investigator in trials encompassing clinical areas such as Psoriasis, Atopic Dermatitis, Hidradenitis Suppurativa, Acne, and Vitiligo.



Ruth Ann Vleugels, MD, MPH, MBA

Ruth Ann Vleugels, MD, MPH, MBA is Vice Chair for Academic Affairs of the Brigham and Women's Hospital Department of Dermatology and Senior Medical Director at Mass General Brigham. She serves as the Director of the Autoimmune Skin Disease Program, Connective Tissue Disease Clinics, and Atopic Dermatitis Program at Brigham and Women's Hospital and Co-Director of the Rheumatology-Dermatology Program at Boston Children's Hospital. She was recently named the Heidi and Scott C. Schuster Distinguished Chair in Dermatology. Dr. Vleugels developed and serves as the Program Director of the Brigham and Women's Hospital Dermatology-Rheumatology Fellowship, which is the only formal training opportunity of its kind nationwide. She is Past President of the New England Dermatologic Society and President of the Rheumatologic Dermatology Society. She was elected to the Board of Directors of the

American Academy of Dermatology to help lead the world's largest dermatologic society, which represents more than 20,000 physicians. An international expert in autoimmune connective tissue diseases, Dr. Vleugels' clinical research focuses on rare autoimmune skin diseases and emerging medical therapies.

Program Disclosure Statement



Omar Ibrahimi, MD, PhD CDDSS Education Chair

"In my position to control the content of this education activity I have reviewed all speakers and planners financial disclosures disclosures of all relevant financial relationships with any commercial interest and found that this program has no conflicts of interest. The ACCME defines "relevant' financial relationships" as financial relationships in any amount occurring within the past 12 months that create a conflict of interest."

Omar Ibrahimi, MD, PhD submitted to CSEP and Dermatology and Dermatologic Surgery Committee 2-5-2



In my position to control the content of this education activity I have reviewed all speakers and planners financial disclosures disclosures of all relevant financial relationships with any commercial interest and found that this program has no conflicts of interest. The ACCME defines "relevant' financial relationships" as financial relationships in any amount occurring within the past 12 months that create a conflict of interest -Debbie Osborn, Exec Director 2-5-24

Competency Questions

Pearls from the Dermatology-Rheumatology Clinic

– Ruth Ann Vluegels, MD, MPH, MBA

Which of the following is a novel approach to treating lupus by blocking type I interferon.

- a. rituximab
- b. bimekizumab
- c. anifrolumab
- d. voclosporin

Which of the following agents was recently FDA approved for the treatment of dermatomyositis?

- a. Intravenous immunoglobulin
- b. rituximab
- c. deucravacitinib
- d. spesolimab

Tips and Pearls for Treating Inflammatory Skin Conditions

– George Han, MD, Ph

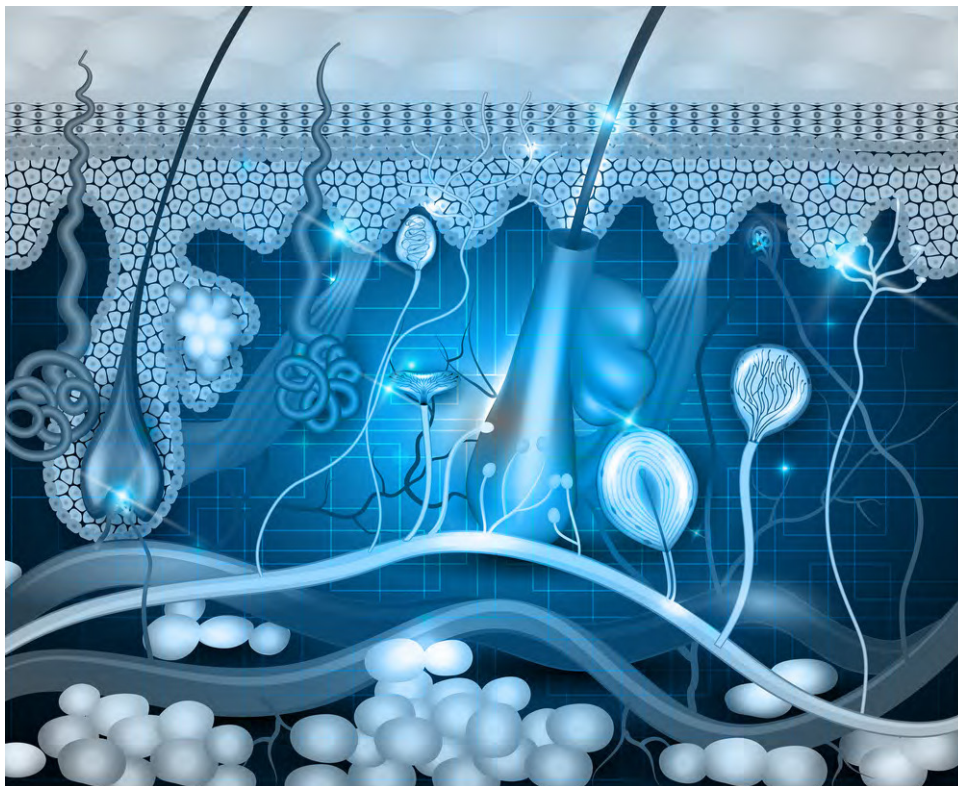
Which one of these pathways is most closely related to the pathogenesis of LP?

- a. Interferon
- b. IL-36
- c. GNAQ
- d. MEK
- e. IL-12

Which one of these medications has been shown to achieve PASI 100 in over half of the patients within 16 weeks?

- a. rispankizumab
- b. apremilast
- c. secukinumab
- d. bimekizumab
- e. adalimumab

CSEP ensures that all decisions related to the planning, faculty selection, delivery, and evaluation of accredited education are made without any influence or involvement from the owners and employees of an ineligible company. In addition, CSEP ensures that the Accredited education is free of marketing or sales of products or services and that all faculty will not actively promote or sell products or services that serve their professional or financial interests during accredited education. CSEP will not share the names or contact information of learners with any ineligible company or its agents without the explicit consent of the individual learner.





The Connecticut Dermatology and Dermatologic Surgery Society
May 1, 2024 Annual Educational Program

CME EVALUATION FORM

CME Certificates will not be given without completing this form in its entirety

Please evaluate the following topics on a scale of 1 to 4 with the following values:

1 - poor 2 - satisfactory 3 - good 4 - excellent

Circle One

- | | | | | | |
|------------------------------|---|---|---|---|---------------------------------|
| 1. SUBJECT MATTER OF MEETING | 1 | 2 | 3 | 4 | |
| 2. LOCATION | 1 | 2 | 3 | 4 | 4. AUDIOVISUAL 1 2 3 4 |
| 3. FACILITIES | 1 | 2 | 3 | 4 | 5. SPEAKERS 1 2 3 4 |

Pearls from the Dermatology-Rheumatology Clinic

– Ruth Ann Vleugels, MD, MPH, MBA

- | | | | | |
|---|--------|-------|---|---|
| Degree to which objectives were met | 1 | 2 | 3 | 4 |
| Did speaker disclose all financial interests in any product or company? | ___Yes | ___No | | |
| Was the presentation fair and balanced? | ___Yes | ___No | | |

Tips and Pearls for Treating Inflammatory Skin Conditions

– George Han, MD, PhD

- | | | | | |
|---|--------|-------|---|---|
| Degree to which objectives were met | 1 | 2 | 3 | 4 |
| Did speaker disclose all financial interests in any product or company? | ___Yes | ___No | | |
| Was the presentation fair and balanced? | ___Yes | ___No | | |

Protecting Yourself in Private Equity Agreement

– Mark D. Abruzzo, Esq

- | | | | | |
|---|--------|-------|---|---|
| Degree to which objectives were met | 1 | 2 | 3 | 4 |
| Did speaker disclose all financial interests in any product or company? | ___Yes | ___No | | |
| Was the presentation fair and balanced? | ___Yes | ___No | | |

Resident Tough Cases

Omar Ibrahimi, MD, PhD

- | | | | | |
|---|--------|-------|---|---|
| Degree to which objectives were met | 1 | 2 | 3 | 4 |
| Did speaker disclose all financial interests in any product or company? | ___Yes | ___No | | |
| Was the presentation fair and balanced? | ___Yes | ___No | | |

PLEASE COMPLETE AND RETURN AT THE END OF THE MEETING

This activity has been planned and implemented in accordance with the Essentials and Standards of the ACCME through the joint sponsorship of CSEP and the Connecticut Dermatology and Dermatologic Surgery Society. CSEP is accredited by the ACCME to provide continuing medical education for physicians. CSEP designates this educational activity for a maximum of 2.0 credit hours in category I credit toward the AMA Physicians Recognition Award. Each physician should claim only those hours of credit that he/she spent in the activity.

Outcome Measurements

Name: _____

- Has this symposium changed the way you will care for patients? ☐ Yes ☐ No
- Do you believe this symposium will have a positive effect on patient surgical or clinical outcomes?
☐ Yes ☐ No
- Can you offer other speakers or topics that will provide information to improve clinical outcomes at the next meeting? ☐ Yes ☐ No _____
- How has this symposium changed the way you will care for patients and What are you going to change?



SAVE THE DATE

Connecticut Dermatology and Dermatologic
Surgery Society

November 13, 2024

Live from 4pm- 9pm at the: Aqua Turf,
556 Plantsville, CT